

Collaboration-Based Stormwater Management in Flathead County

Katherine Lynch - Dombroski

Big Sky Watershed Corps Member

Western Montana Conservation Commission & City of Kalispell





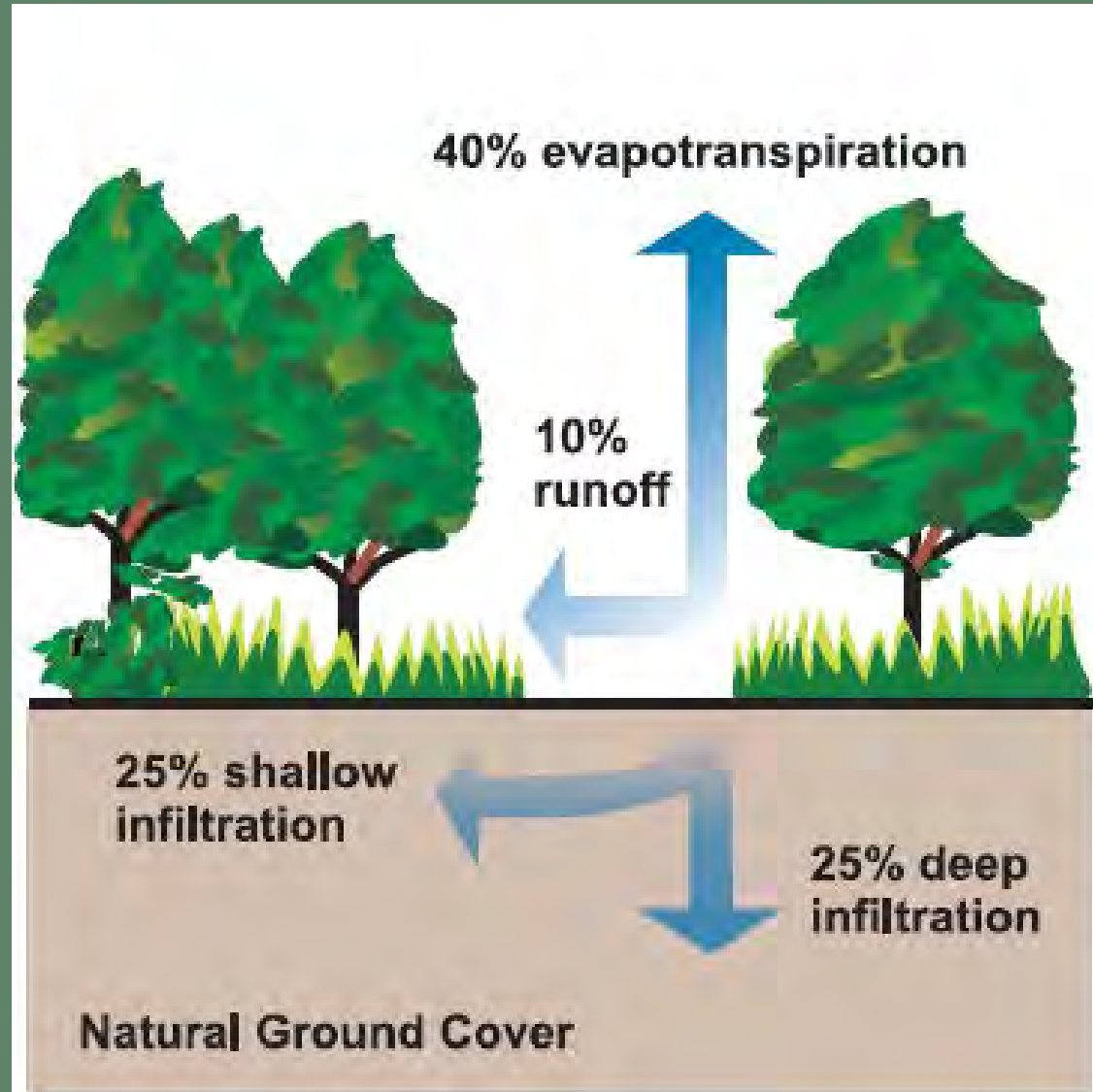
Presentation Overview

What is Stormwater?
How Stormwater is Managed
Stormwater Pollution
Education and Outreach
Collaboration and Stakeholders
Flathead Rain Garden Initiative
Adopt - a - Drain
Future and Goals
Lessons Learned

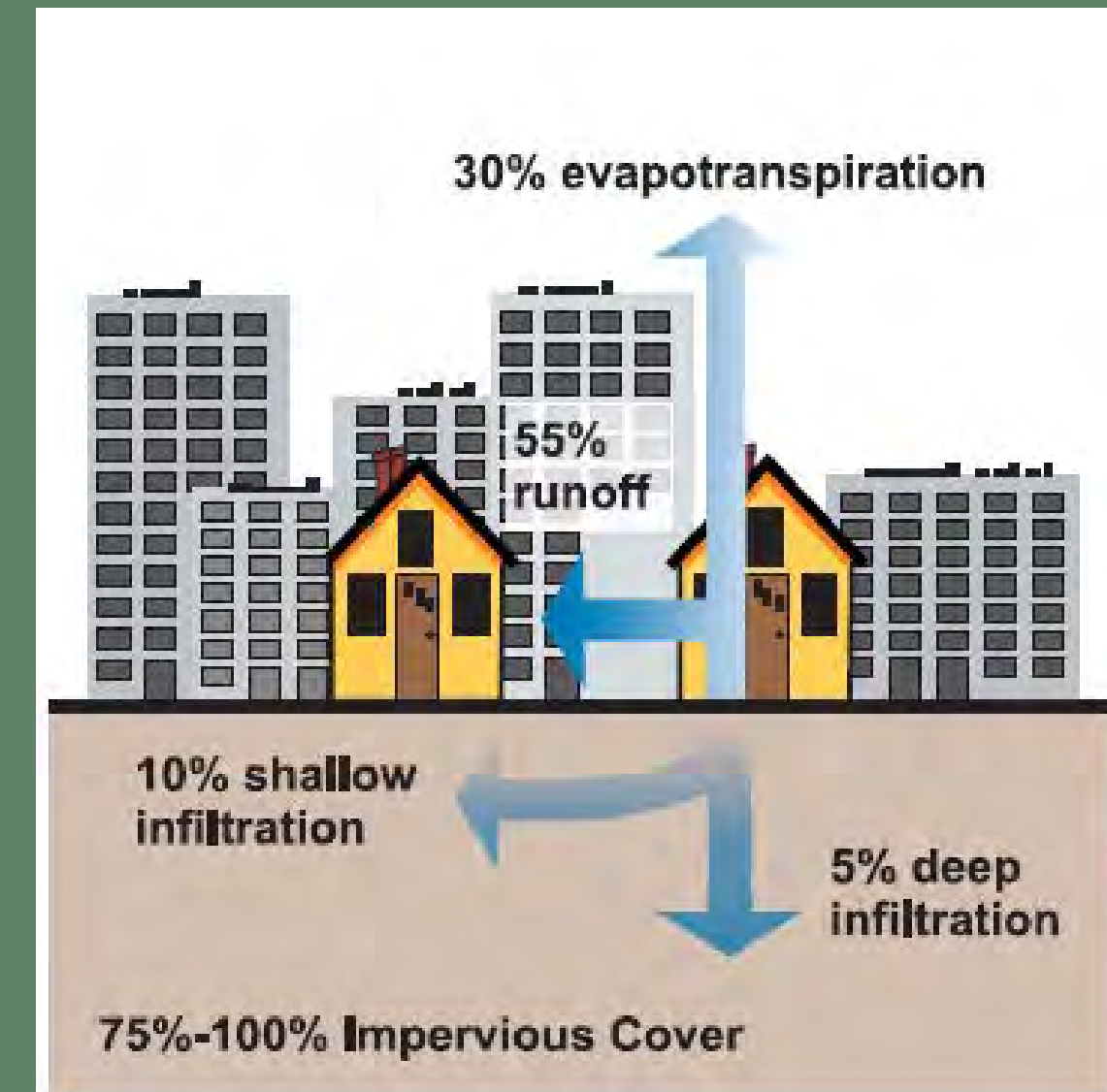
What is Stormwater?

When rain falls on a landscape...

It can become **GROUNDWATER**
if it lands on a soft surface



It can become **STORMWATER**
if it lands on a hard surface



How Stormwater is Managed



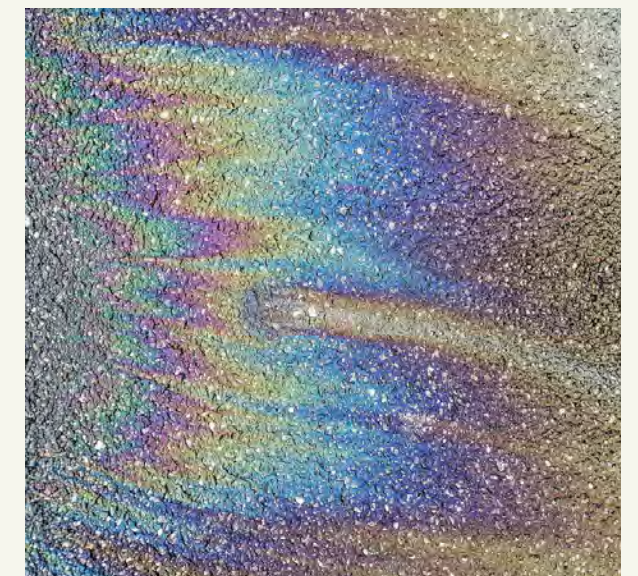
Municipal Separate Storm Sewer System AKA MS4

Stormwater Pollution



Fertilizer & Pesticides

Sediment



Deicing Agents

Litter

Oil & Grease

Nutrients

Stormwater Pollution



Fertilizer & Pesticides



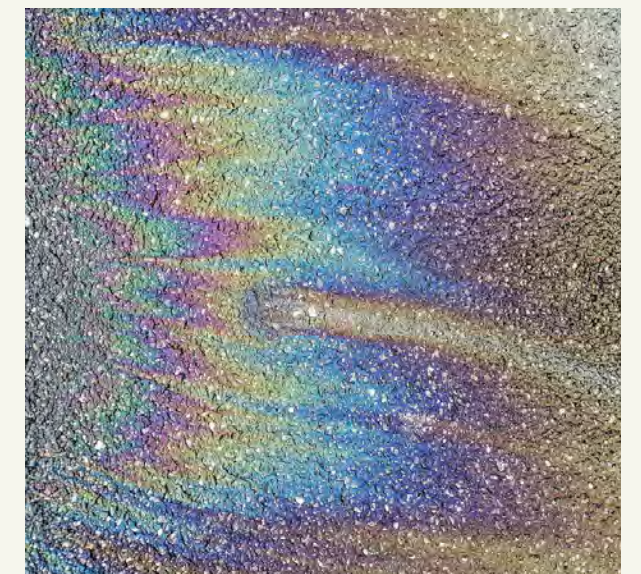
Sediment



Nutrients



Litter



Oil & Grease

Protect Montana Waters



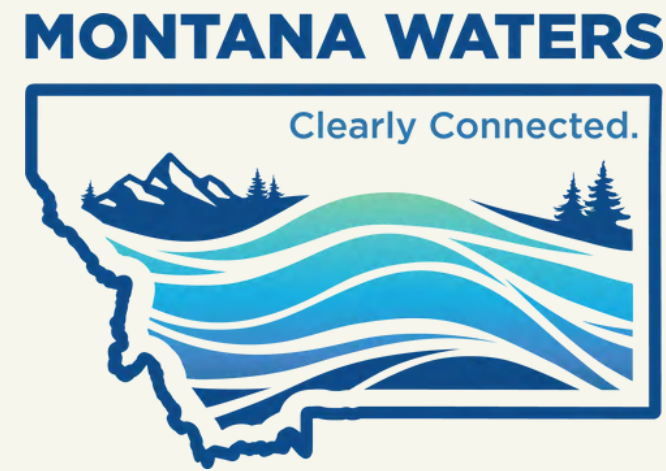
Education and Outreach

Goal: To teach residents about stormwater pollution and provide opportunities to improve local water quality



Flathead
Rain Garden Initiative

Collaboration and Stakeholders



Adopt-a-Drain

Flathead
Rain Garden Initiative





Flathead
Rain Garden
Initiative

What is a Rain Garden?










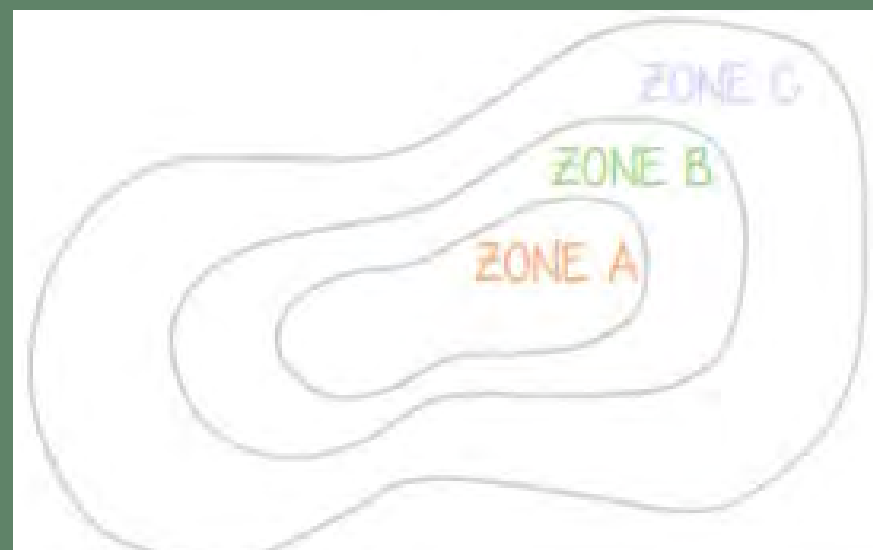
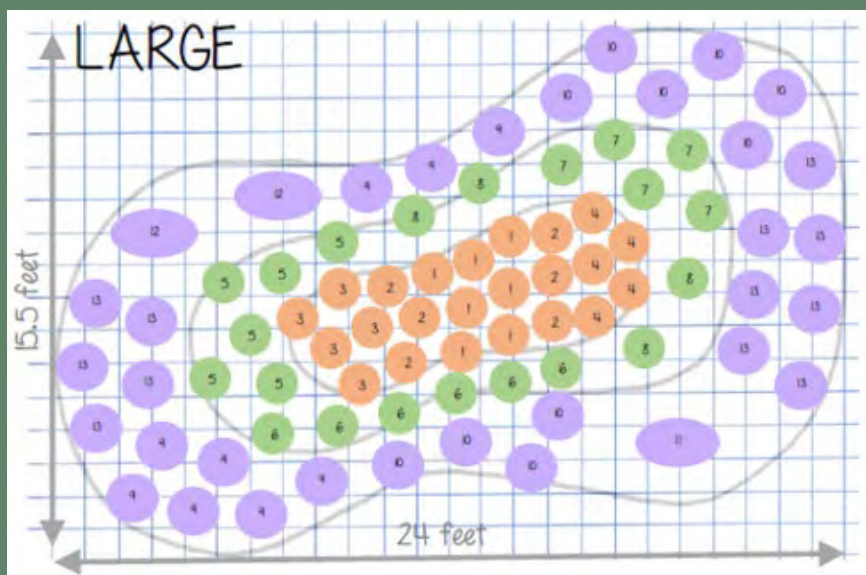
What is a Rain Garden?

Rain Garden Building

A DIY Workbook



Zone A		Zone B		Zone C		
1	Horsemint (<i>Agastache urticifolia</i>)		5	Western Columbine (<i>Aquilegia formosa</i>)		
2	Tufted Hairgrass (<i>Deschampsia cespitosa</i>)		6	Self-heal (<i>Prunella vulgaris</i>)		
3	Yellow Monkeyflower (<i>Erythranthe lutea</i>)		7	Alumroot (<i>Heuchera cylindrica</i>)		
4	Red Monkeyflower (<i>Erythranthe cardinalis</i>)		8	Strawberry (<i>Fragaria virginiana</i>)		
				9	Silky Lupine (<i>Lupinus sericea</i>)	
				10	Aspen Fleabane (<i>Erigeron speciosus</i>)	
				11	Rocky Mountain Maple (<i>Acer glabrum</i>)	
				12	Mountain Ash (<i>Sorbus scopulina</i>)	
				13	Prairie Junegrass (<i>Koeleria macrantha</i>)	



Flathead Rain Garden Initiative Website



Flathead Rain Garden Initiative

- Launched in 2020
- Engaged 150 residents
- 17 rain gardens built
- Technical and financial support
 - Site visits
 - Design assistance
 - Homeowner Incentive Agreement
 - Impervious area calculator
 - Tiered funding, \$375-\$625
 - Gift certificates

Community Involvement



July Rain Garden Walking Tour, Downtown Kalispell



Free the Seeds Tabling Outreach



May Rain Garden Workshop at Center for Native



Kid's Rain Garden Workshop



Adopt-a-Drain

- Launched in 2021
- Recruits Kalispell residents to volunteer to regularly remove debris from the surfaces of stormdrains
- Volunteer toolkit and training
- 32 drains adopted
- 15 cleanings reported



Adopt - a - Drain Website

ADOPT -A-DRAIN & FLATHEAD RAIN GARDEN INITIATIVE





Future of Adopt -a-Drain and Flathead Rain Garden Initiative

Our Goals



Integrate stormwater curriculum into Kalispell elementary schools

ADOPT - A - DRAIN

Adopt more drains!

FLATHEAD RAIN GARDEN INITIATIVE

Build a network of volunteers

Build more rain gardens!



Volunteer and Opportunity Newsletter



Northwest Montana Fair and



Postcard



Rain Garden Walking Tour Flyer

Lessons Learned

- Foster your relationships
- Utilize your team
- Exercise flexibility and creativity
- Follow-up!





Flathead Rain Garden Initiative Website



Adopt - a - Drain Website

WORK

406 - 334 - 6716

CELL

303 - 888 - 7684

EMAIL ADDRESS

katherine.lynch - dombroski@mt.gov
lynch.dombroski@gmail.com

Thank You!